

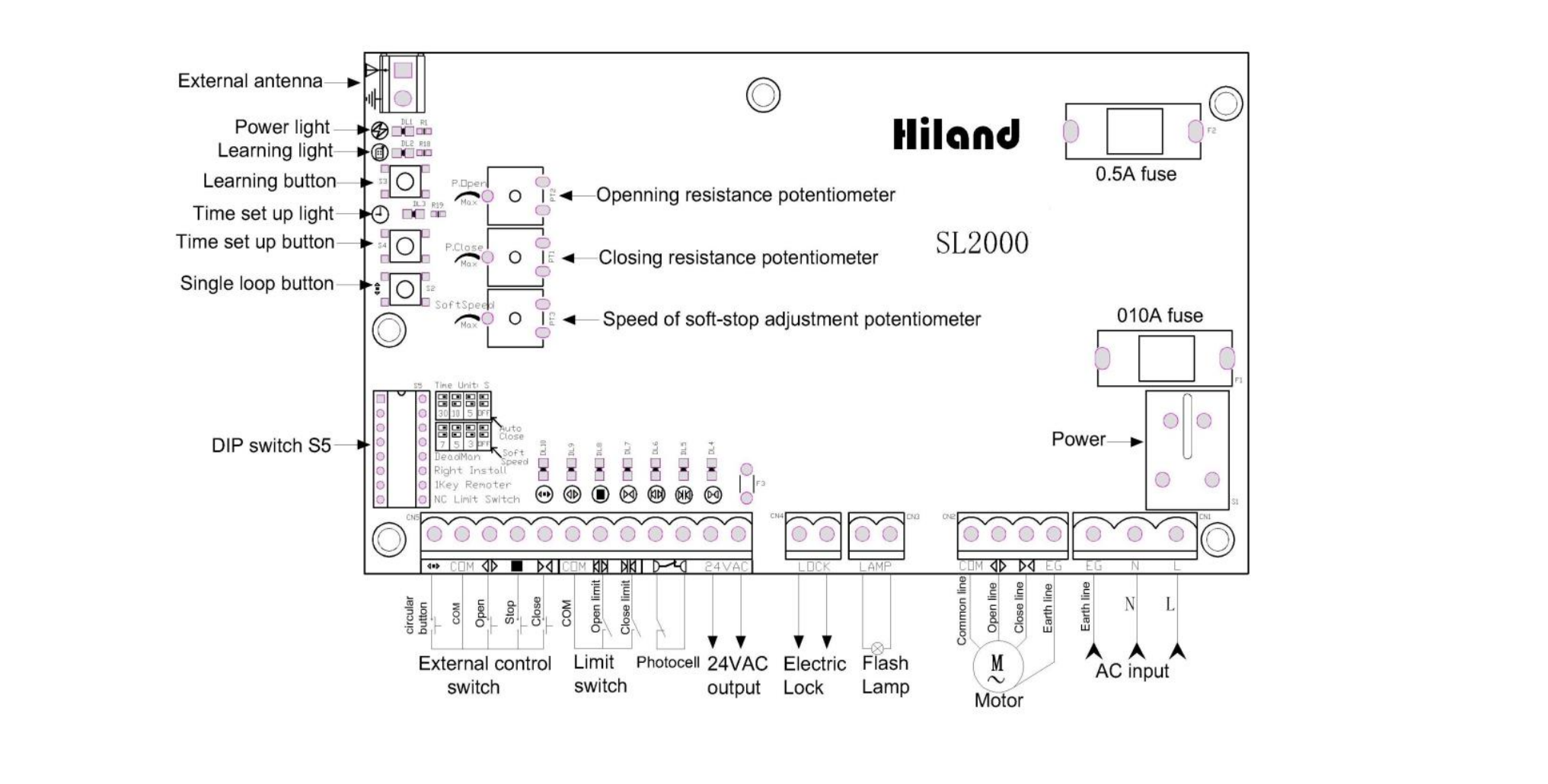
I Safety Instruction

- 1.1 For security, please read instructions carefully before initial operation; making sure that the power is off before connection.
- 1.2 Please clear the memory before initial operation. (Ref.: Erasing ALL learned/memorized Transmitters)
- 1.3 Do not learn the remote control when motor is operating in order to avoid mis-operation.
- 1.3 The received signal may be interfered by other communication devices. (e.g. the wireless control system with the same frequency range)
- 1.4 It is used only for the manual remote control and wireless control equipment / system which must not endanger life or property during running failure, or its security risks have been eliminated.
- 1.5 It should be applied in dry indoor place or in the electric appliance place.

II Technical Index

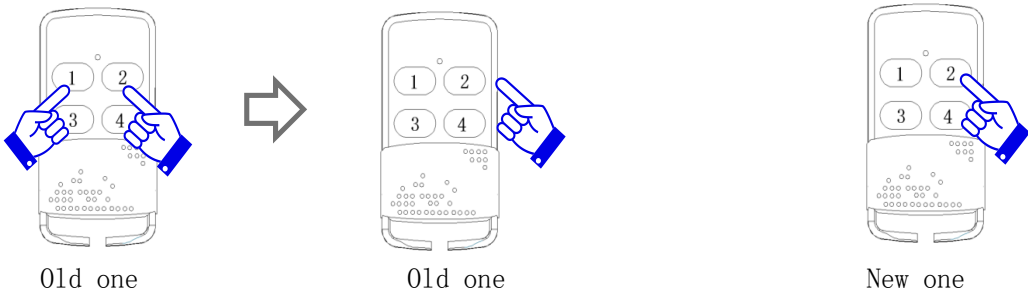
- 2.1 Working voltage: 220VAC/110VAC,50Hz/60Hz
- 2.2 Temperature range: -20℃ to 60℃
- 2.3 Loading capacity : 2HP 220VAC/1HP 110VAC
- 2.4 Built-in fuse: electric circuit(0.5A); Motor(10A),Please exchange appropriate fuse accoding to loading capacity
- 2.5 Time of soft-start : 1S ; soft-stop: 3S/5S/7S are optional
- 2.6 Running time: Adjustable from 5s to 150s ----S4 is to set up
- 2.7 Frequency: 433.92MHz
- 2.8 Transmitter stored: 30PCS/200/300PCS
- 2.9 Output voltage: AC24V
- 2.10 Output with electric lock: AC220V/AC110V
- 2.11 Output with flash lamp: AC220V/AC110V
- 2.12 External switch (open,stop,close in a loop)
- 2.13 External limit (DIP8 to select NO and NC)
- 2.14 External infrared (NC contact)
- 2.15 Resistance of opening and closing door is adjustable
- 2.16 Auto close time is adjustable: (5S,10S,30S are optional by using DIP1,DIP2)
- 2.17 Deadman and Impulse remote system are optional by DIP5
- 2.18 Installation at left or right side is optional by DIP6.
- 2.29 Single / three button control is optional by DIP7
- 2.20 Size: 165*92*38
- 2.21 Weight: 453g

III Wire connection



IV Set up

- 4.1 **Learning and erasing transmitters:** Press the learning button S3 in the board, LED DL2 is on, enters into the learning process; Press the same button twice, LED blinks for several times, then off. The learning process is successful. Press the learning button, continue pressing for 8s until LED turns off; Release learning button, LED will be on (about 1s) and then off; the erasing process is successful. (Ignore this step if transmitter already matches the opener before delivery)
- 4.2 **self-learning function: Learning new remotes by old remotes**
 - Tip of Remote control **self-learning function**: Use the transmitter that already has been learned as old transmitter, press button 1 and button 2 at the same time and then press button 2 to let it enters into the learning process .In this way , new transmitter can be learned without press the learning button on the control board. (SL2000 and SL2020 can learn 30pcs max, SL2003 and SL2023 can learn 300pcs max)



- 4.3 **Opening/closing limit adjustment:** Remote control the door (or move the door manually) , adjust the position of limit device to make sure the door would touch the limit switch when open or close the door .LED LD6/DL5 in the controller will be off when limit device touches limit switch(Limit switch is NC).
- 4.4 **External infrared switch:**Photocell connector connects the NC contact of photocell switch , DL4 LED turn on after the connection, And DL4 LED turn off when blocking out the transmit or receive signal of photocell artificially. Infrared sensor doesn't react when door opening and the door will reverse to limit point if photocell signal disconnect when door closing. If no need of using photocell protection, make the connector of photocell short circuit with terminated line(the connector is short circuit when leave factory).

4.5 Motor running time adjustment: Motor running time is adjustable from 5s to 150s. Press S4 button to close the door when the door opens at the opening limit position and the door stops when meets closing limit .It is the closing running time of motor. Press S4 button to open the door when the door is closed at the closing limit position and the door stops when meets opening limit .It is the opening running time of motor . (It is only needed to select one process between these two. DL3 keeps blinking during the process and will be off after motor stops at the limit position. Running time adjustment is finished).

4.6 Resistance adjustment: Adjust potentiometer P.Open/P.Close to change the opening/closing resistance. Resistance increases when adjust it C.W .Make a resistance to door after the adjustment in order to check if it is appropriate .

4.7 Soft stop speed adjustment: Adjust potentiometer PT3(SoftSpeed) to adjust the speed of soft stop. Speed goes down when adjust it CCW (Soft stop speed adjustment only work when time of soft stop is effective)

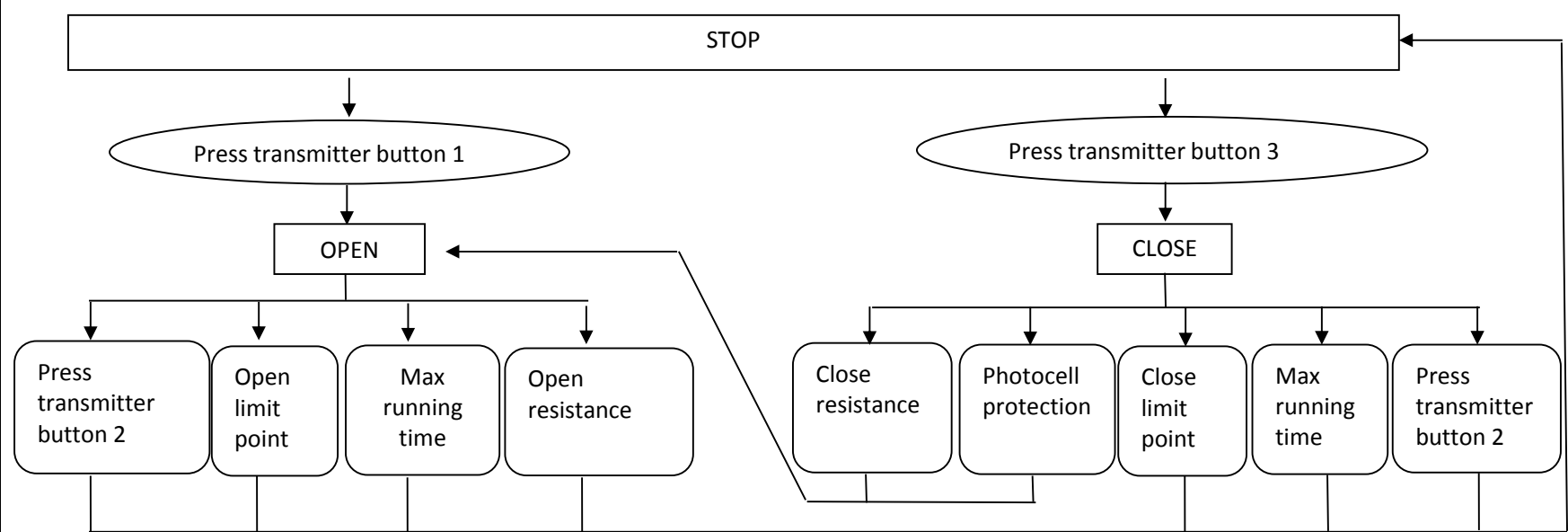
4.8 DIP switch S5 logic function:

DIP1	DIP2	Auto close time	DIP3	DIP4	Soft stop time	DIP5	Latch and non-latch for remote control
OFF	OFF	No auto close	OFF	OFF	No soft stop	ON	Deadman, Latch
OFF	ON	5S	OFF	ON	3S	OFF	Non-latch
ON	OFF	10S	ON	OFF	5S		
ON	ON	30S	ON	ON	7S		

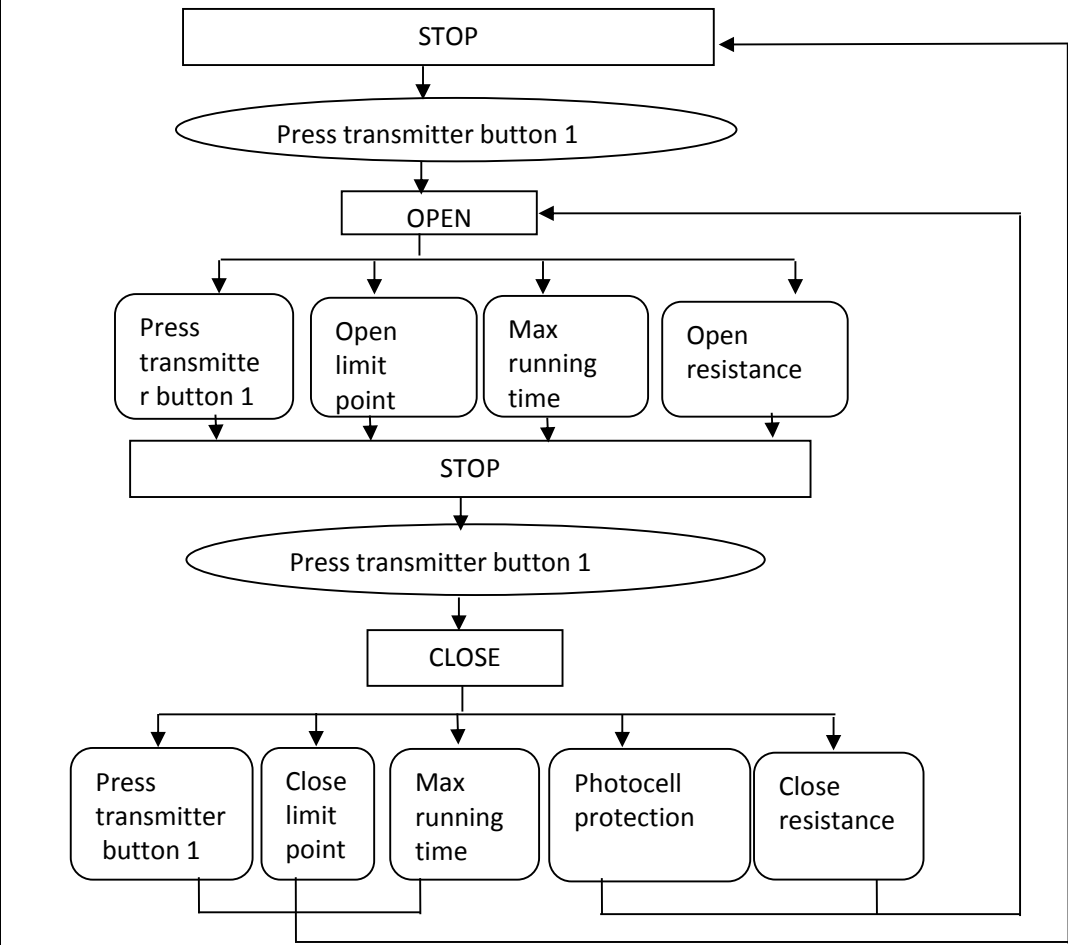
DIP6	Right/left side installation	DIP7		DIP8	
ON	ON or OFF can change the current operating direction of motor	ON	Single button control	ON	External limit NC switch
OFF		OFF	Three button control	OFF	External limit NO switch

V Operation Instruction

5.1 Three button control process (DIP 7 at OFF position)



5.2 Single button control process (DIP 7 at ON position)



Description:
Single button control , press-open-press-stop-press-stop; Only the learned button is effective in the transmitter, original button is not effective any more when a new button has been learned in the same transmitter (For example, button 1 was learned firstly, button 2 or 3 has been learned of the same transmitter afterwards , then button 1 was not effective any more)

VI Notes

- 6.1. Man-made resistance is needed after adjusting resistance,in order to make sure the resistance is appropriate or not.
- 6.2. Open and stop resistance shall be examined regularly.

VII Model difference

Model	Working voltage	Transmitter stored (pcs)	Frequency	Code
SL2000	220VAC	30	433. 92Mhz	Rolling
SL2003	220VAC	200	433. 92Mhz	Rolling
SL2001	220VAC	300	433. 92Mhz	Rolling
SL2020	110VAC	30	433. 92Mhz	Rolling
SL2023	110VAC	200	433. 92Mhz	Rolling
SL2021	110VAC	300	433. 92Mhz	Rolling

The interpretation and ownership of this manual belong to Hiland company. Any change of the product can be without prior notice.